

# HEPA Minipleat, DTM, RPM

## Specifications

Description	Ccell F9 MERV15			Ccell SemiHEPA 95%@0.3um			99.99% at 0.3um		99.9995% at 0.1-0.2um (MPPS)	
Model	C90			CH			H4MH		U5MH	
Frame Thickness mm (Standard 70mm)	45	70	90	45	70	90	70	90	70	90
Initial Pressure Drop Pa at 0.45 m/s	60	50	50	70	50	50	120	90	160	120
Filter Class to EN1822	F9			E10 / E11			H13 / H14		U15	
IES RP-CC-001.3	-			-			Type A / C / D		Type F	
EN1822 MPPS Global / Integral Value	75%			95.0%			≥99.95% / 99.995%		≥99.9995%	
PSL/DEHS/DOP Efficiency@ 0.3um	85%			98.0%			≥99.99% / 99.999%		-	

Frame Thickness of 110mm and HEPA Minipleat GEL frame thickness 80mm and 85mm available. Recommended storage life of unpacked filters in cartons shall be <12mths at cool dry place. Caution HEPA filters are fragile and extreme caution in required during handling and installation only by trained and experienced personnel.

## Dimensions

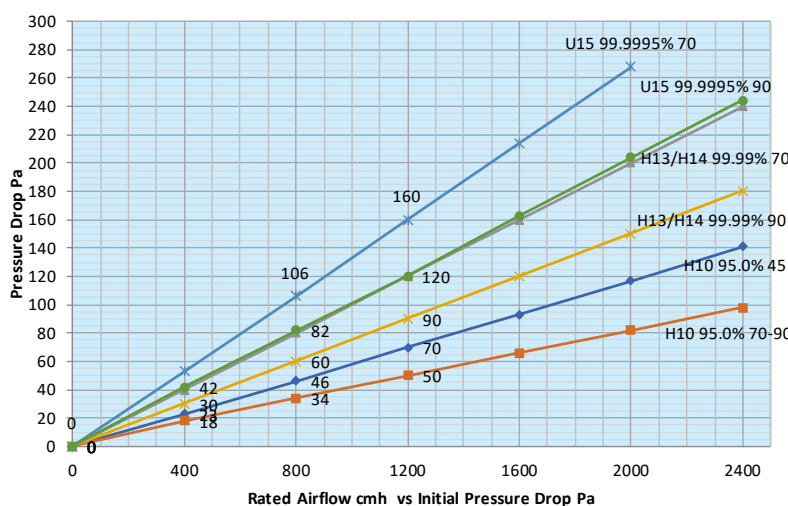
Module Actual Size L x W x T  in mm	Filter Actual Size L x W x T  in mm	Rated Air Flow  cmh	Media Area  sqm	Packing Weight kg	
				Module	Filter
RPM TH Replaceable Modules (GEL)-Obsolete, filters replacement only					
600 x 600 x 260	558 x 558 x 85	500	10.9	7.0	3.5
1210 x 600 x 260	1168 x 558 x 85	1000	19.9	14.0	6.0
RPM TR Replaceable Modules (Gasket) new 2018					
591 x 591 x 260	558 x 558 x 70	500	10.9	7.0	3.5
** 1201 x 591 x 260	1168 x 558 x 70	1000	19.9	14.0	6.0
RPM TD / RPM TRDF Replaceable Modules with Diffuser					
595 x 595 x 260	525 x 525 x 70	450	8.6	7.0	3.0
** 1210 x 600 x 260	1138 x 528 x 70	900	18.2	14.0	6.0

Length and Width dimensions are interchangeable.

\*\* RPM TR/TD 1210x600 comes with OD12" (OD300mm & OD305mm) collar

## Technical Data

Continuous Operating Temperature 60 °C  
Relative Humidity 80 %  
Recommended Final DP 250-350 Pa/ Twice of Initial DP  
DP:Differential Pressure Drop  
Max Final Pressure Drop 500 Pa  
Flammability Non Flammable,Non Hazardous, Stable Solid



**International Filtration**

**CLYDE-IFC (S) PTE LTD**

9 Joon Koon Road Singapore 628973 Tel: +65 6785 0700 Fax: +65 6785 1011  
Email: sales@clyde.sg http://www.clyde.sg

# Minipleat HEPA



**International Filtration**



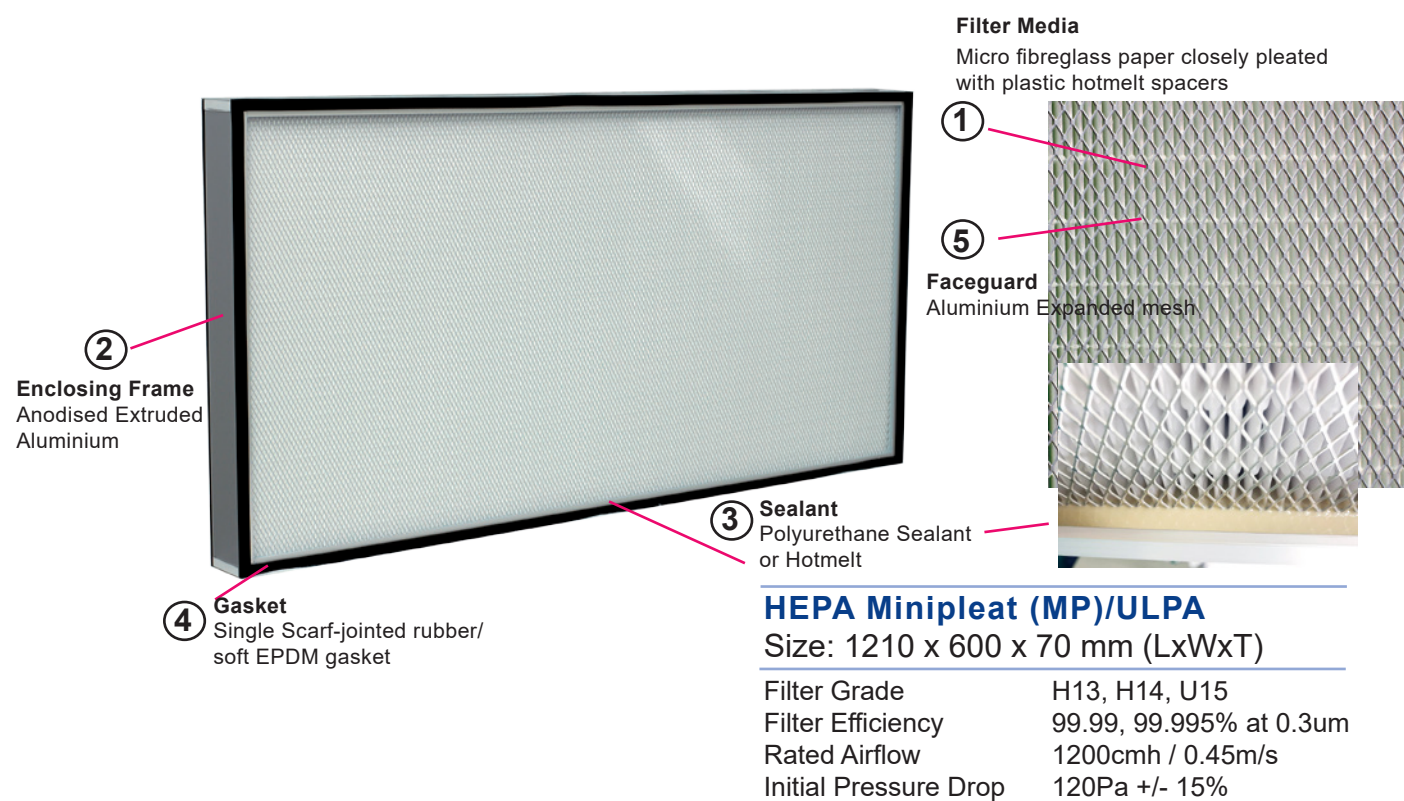
## General Characteristics



Minipleat (MP) HEPA filters have been widely used in a wide range of industries. They are used as terminal modules in directional clean rooms, to acquire laminar air flow in clean rooms and aseptic environments. Selection include 1. Disposable, 2. Replaceable Modules or 3. FU (Fan Unit) w Replaceable Module or FFU w HEPA Filter

- **Nuclear Establishments**
- **Pharmaceutical Productions**
- **Clean rooms**
- **Electronics Production**
- **Hospitals and Operating Theatres**
- **Isolation Wards, Laboratories**

Being lightweight and slim, MP HEPA filters require less space and are used in laminar flow clean benches, biological safety cabinets, Fan Filter units, terminal housings and T-ceiling grids.



## Construction

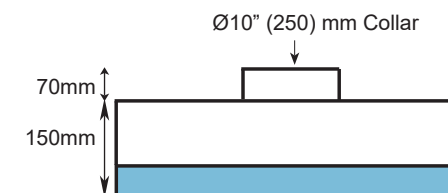
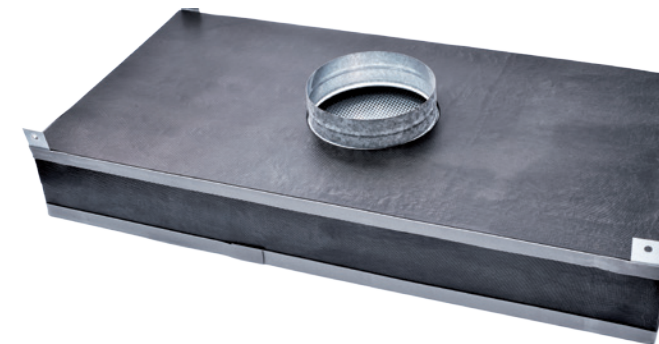
Minipleat (MP) filter media packs are constructed using continuously mini-pleated borosilicate micro fibreglass paper. Sem-HEPA are synthetic which offers extreme low pressure drop. The pleats are separated using thermosetting adhesive hotmelt beads. Each filter pack is assembled into an anodised extruded aluminium casing with both faces protected by aluminium expanded mesh. The filter media is sealed to the casing with hotmelt or polyurethane PU adhesive.

Optional frame casing materials include galvanised and stainless steel. A single scarf-jointed soft

EPDM/ 5mm gasket is usually affixed at the downstream face or air outlet. HEPA GEL Minipleat (MP) filters are installed in knife-edge housings. Our modules with gasket or gel seal will achieve leak-free installation.

HEPA GEL minipleat utilises special formulated Silicone as gaskets and jelly gel like and forms a permanent adhesive bond between the filter frame gel channel and the housing knife edges. The HEPA GEL Minipleat (H4JH) filters have extruded casing depth 80mm or 85mm or custom Single Header Flange upstream GEL.

## Disposable Terminal Modules (DTM)

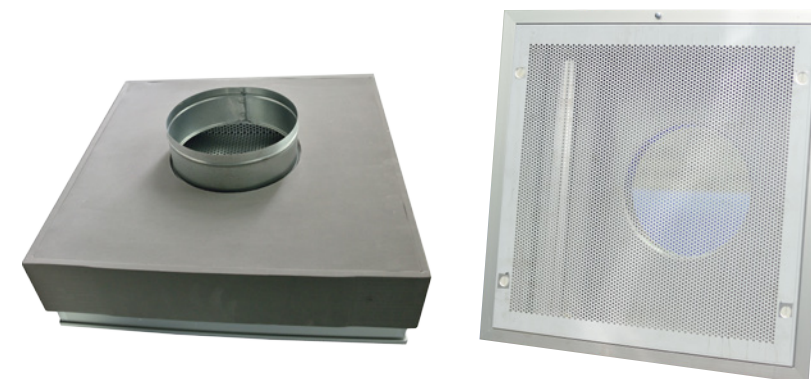


The DTM range offers feasible and lower cost solution to ensure clean air over critical work areas. They are suitable for ceiling or wall mounting in single or in multiples depending on the size of area of protection.

The minipleat filter cell is factory-sealed into the aluminium constructed casing and comes with foam insulation and an aluminium expanded mesh as faceguard.

Hanging brackets are provided. The standard size 600x1210mm (LxW) is suitable for standard T-bar ceiling grid, 10"(250mm) round collar is attached, provided for flexible or rigid duct connection to the air supply.

## Replaceable Modules (RPM)



The Replaceable Modules (RPM) comes in T-Grid Gel(TH) installations, T-Grid Rubber Gasket (TR) or T-Grid Rubber Gasket (TD) wD iffuser and are similar to DTM in terms of applications. Although with a higher initial cost, it offers an easy and cheaper option upon HEPA filter replacement.

The RPM TR module housing is made of Aluminium(Al), 100% sealed and comes with knife edges. The filter is secured in the housing with four Aluminium T-plates (clips) underneath. The installation and replacement for filters can be achieved quickly with the design clips installation. The module housing is installed with HEPA Gasket filters. RPM TH modules with GEL filters which is superseded by RPM TR Gasket type.

RPM TRFU does not come with collar and insulation for FFU(Fan Filter Unit) installations.

RPM TD comes Aluminium Perforated Diffuser and bracket clamps for tightening rubber gaskets filters for room side replacement to ensure leak-free installation. RPM TRDF comes w Diffuser flange with T clamps for metric ceiling. Well suited for Use in laminar air flow ultra clean major operating theatres, pharmaceutical or clean room installations. Hanging brackets, pressure ports are provided Optional: Adjustable inlet damper

